

★ STARLIGHT

STREAM PLAYOUT SYSTEM

STARLIGHT STREAM PLAYOUT SYSTEM

Starlight stream playout system allows the broadcaster to deliver / telecast live stream / content on a fly with highest quality. It can be used from a small, single box playout system to a large, multi-channel workflow. Starlight detects any stream outage and automatically switches to an alternate media. It also allows scheduling of any local or streaming content. Starlight is available in Single as well as Quad playout configuration.

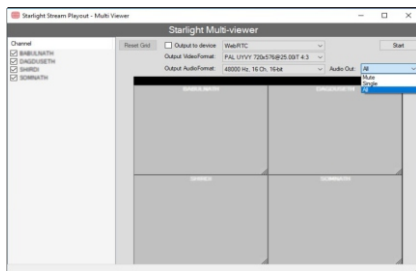
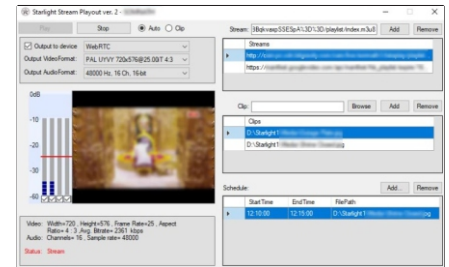
- Support all common streaming formats
- Auto switching to Image/Video in case of stream outage
- Provides SDI Mosaic Output
- Auto/Manual mode available
- Allows scheduled playlist
- Displays live stream statistics and preview
- Shows live Audio level bars for visual monitoring
- Available in Single and Four stream variant models

FEATURES

STARLIGHT STREAM PLAYOUT MODULES

STARLIGHT STREAM PLAYOUT

This is playout module that enables the user to play the live IP streams to the baseband output. The system seamlessly switches to a local media in case of any stream outage. It also allows the user to pre-schedule clips or streams at fixed times and duration. The preview of the final output is shown along with audio-bars for visual monitoring

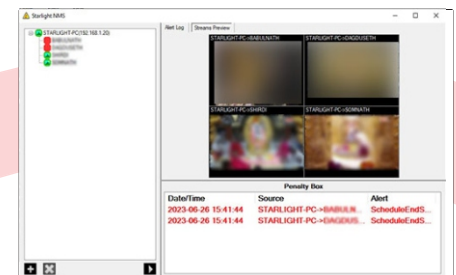


The optional Starlight Mosaic allows user to create a custom multi-window output in server. The Mosaic is played out on the SDI port, with multiple audio mixing options. This can be used simultaneously with each stream playing on its own port.

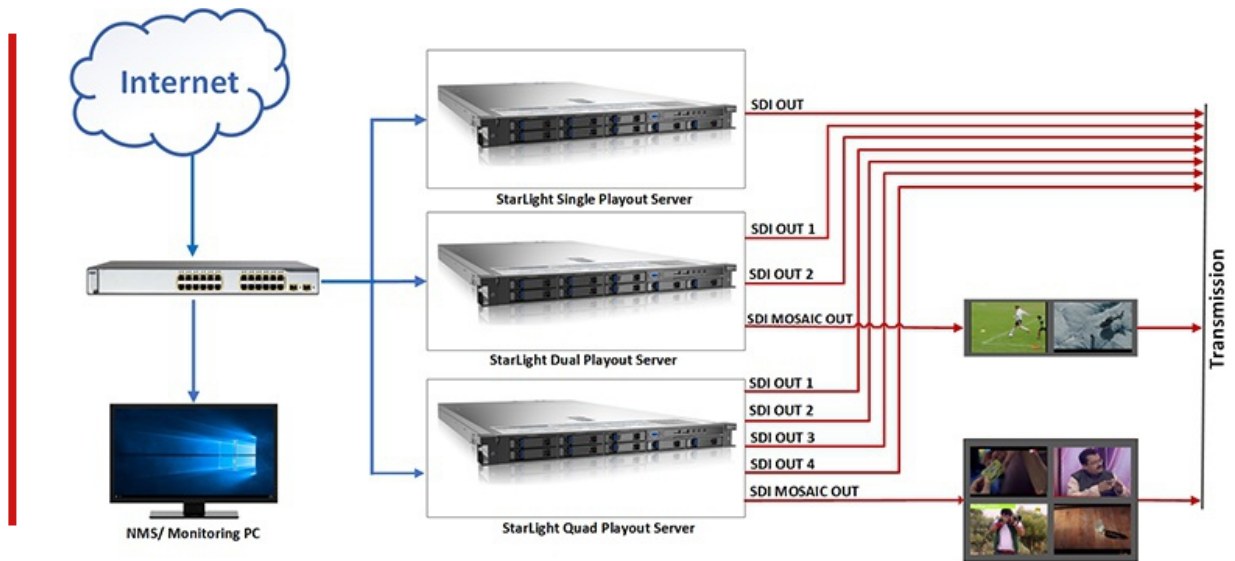
STARLIGHT MOSAIC

STARLIGHT NMS

Starlight NMS monitors the status of all the streams of all servers on the network. This is an extremely useful tool to monitor the status of entire Starlight solution from a single point. This gives a visual as well as audible alarm in case of any outage or errors. A penalty box gives a quick view of the current fault. This also allows the user to view the live source stream to check its status.



WORKFLOW



INPUTS

- HLS
- RTMP
- SRT
- LL-HLS
- RTSP
- UDP
- MPEG-DASH
- WebRTC
- YouTube

SERVER SPECIFICATIONS

Form Factor: 19", 2U with Mounting Rails (Extendable lengths 25" to 33.25")	Power Supply: 570W AC power supply with PFC [24-pin, (8-pin=12V)] AC Voltage : 100 - 240V, 50-60 Hz, 7 - 3Amp
Temperature: Operating 10 - 35° C, Non-operating -40 - +70°C	Humidity: Operating 8 - 90% non-condensing, non-operating 5 - 95% non-condensing

SPECIFICATIONS

OUTPUTS

Video Output: 10 bit SD/HD switchable SDI (SD/HD) Output:- 4:2:2 SMPTE 259M and SMPTE 292M, 8/10 bit SDI (270 Mbps @ 525/625)	Audio Output: 8 Channels embedded in SD and HD	HD Format Support: 720p50, 720p59.94, 720p60, 1080PsF23.98, 1080p23.98, 1080PsF24, 1080p24, 1080PsF25, 1080p25, 1080PsF29.97, 1080p29.97, 1080PsF30, 1080p30, 1080i50, 1080i59.94 and 1080i60
Sync Input: Blackburst in SD, 720p50, 720p59.94, 1080i50 and 1080i59.94 formats or Tri-Sync in any HD format	SD Format Support: 625/25 PAL, 525/29.97 NTSC and 525/23.98 NTSC	